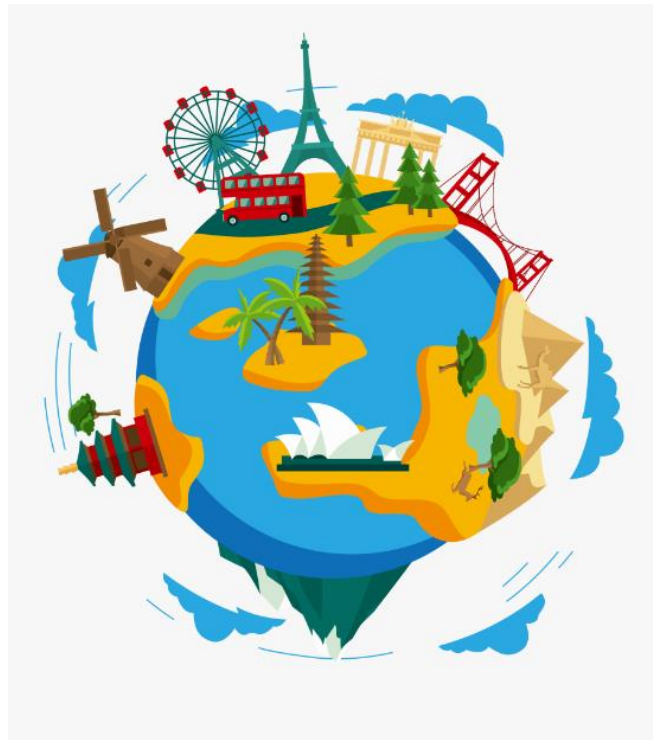


# Inspiring Curriculum Newsletter

## Willows

Autumn 2022



**Our Theme: Road Trip Around the World**

### **Our School Values:**

Caring, Commitment to Achieve, Co-operation,  
Happiness, Independence, Respect



Welcome to the Willows! We are all looking forward to a brand new academic year working together on lots of exciting topics.

<b>Autumn Term 2022</b>
Our theme is 'Road Trip Around the World'
On our WOW Day we will be doing a variety of activities, including making passports and identifying landmarks from around the world.
For our Exit Day we will be creating and playing an "Around the World" board game.

### **English**

In English, we are learning how to develop creative writing skills in fiction with both familiar and historical settings. We will be using "Around the World in 80 Days" as our inspiration. We will also be exploring the features of letters, recounts and persuasive texts, as well as promoting grammar, spelling and punctuation every lesson.

*Knowledge: layout, audience and purpose of genres of texts*

*Skills: noun phrases; adverbial phrases and using different sentence structures.*

### **Mathematics**

In Mathematics, we are learning about place value and the size of numbers. We will then move onto the calculation skills of addition and subtraction, combining these skills in real-life and word problems. Times tables will be practised on a daily basis, in preparation for the Government's Year 4 Multiplication Facts Check in the summer term.

*Knowledge: how number is organised in our number system*

*Skills: adding and subtracting; reasoning and problems solving*

### **Science**

In Science we are studying two themes, States of Matter and Animals including Humans. We will identify solids, liquids and gases and see how they can change state, and we will study nutrition, the skeleton and muscles within the Animals topic.

*Knowledge: why and how matter changes states; features of animals' bodies and what keeps them healthy*

*Skills: working scientifically; how to make observations and how to make a fair test.*

### **PSHE**

In PSHE, our themes within the Jigsaw scheme of work will be 'Being Me in my World' and 'Celebrating Difference'.

*Knowledge: understanding the similarities and differences of people*

*Skills: speaking and listening skills; discussion and turn taking*

## **RE**

In R.E, we are focusing on God and Incarnation, discussing such themes as the gospels and the Holy Trinity in Christianity.

Knowledge: *key concepts of Incarnation and its links to the gospels*

Skills: *discussion, speaking and listening and how to express and opinion in writing.*

## **Geography**

In Geography, we will be looking at the weather, landmarks and land use in a variety of countries and comparing these to Lincolnshire. We will recap the location of cities and continents and practise using the points of the compass with directions.

Knowledge: *of locations and land use changes over time*

Skills: *comparing and contrasting; using a compass and plotting a location.*

## **Design and Technology**

In DT, we will be designing and making a string of oriental lanterns. We will look at parallel circuits with batteries, then build each small paper lantern in turn before putting them together in a string.

Knowledge: *how circuits work and the purpose and value of a prototype*

Skills: *working scientifically; evaluating and revising a plan and prototype.*

## **Computing**

In Computing, we will be reminding ourselves about how to stay safe online and then working on a presentation about ourselves, using text and images. After half term, we will be learning how to write a program to move a character on the screen.

Knowledge: *How we can use different software to express our opinions and explain things*

Skills: *word processing skills; importing images; changing backgrounds and saving documents.*

## **P.E**

With Mr Toothill we will be completing activities in hockey, gymnastics and swimming.

Knowledge: *rules of the sports and activities*

Skills: *fundamental movement skills.*

## Important Information

As per the school homework policy, which is available at [www.nettleton.lincs.sch.uk](http://www.nettleton.lincs.sch.uk), homework will be set on Friday and returned the following Thursday.

Our Swimming day is: Thursday

Our P.E. day is: Wednesday

Please make sure the children are wearing their PE uniform on these days.

Spelling rules will be learnt and tested on a weekly basis, and tables tests (Maths Challenge) will take place on a Friday. It would be greatly appreciated if you could help your child to prepare for these each week.

Please continue to support your child with their reading and complete their Reading Record book as often as possible each week. Discussing and spelling words from the Y3/4 list within the Reading Record would also be a great help.

***I hope this gives you a clearer picture of the work we will be covering this term. I'm sure we will have a great time exploring all these areas. If you feel you can help in any way, I would be delighted to hear from you, and, as always, if you have any queries about anything, please pop in to see me.***

***Thank you.***

***Dena Jones***